



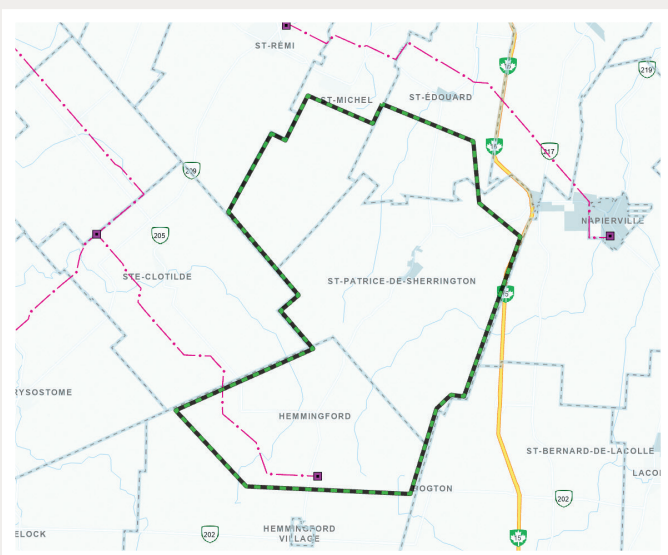
LES JARDINS WIND FARM PROJECT



Kruger Energy is moving forward with the development of a wind project to build a wind farm spanning four municipalities in the Jardins-de-Napierville Regional County Municipality (RCM): Saint-Patrice-de-Sherrington, Saint-Édouard, Saint-Michel, and the Township of Hemmingford.

The proposed wind farm project would help meet Québec's energy needs and help the government reach its 2030 greenhouse gas (GHG) emissions reduction targets. The project is currently in the initial development phase and will evolve based on environmental studies and regulatory requirements and in consultation with local stakeholders and communities.

PROJECT LOCATION



PROJECT SUMMARY

MUNICIPALITIES

**Saint-Patrice-de-Sherrington
Saint-Édouard
Saint-Michel
Township of Hemmingford**

PROJECT PARTNERS

**Jardins-de-Napierville RCM
Mohawk Council of Kahnawà:ke**

PLANNED CAPACITY

147 MW

PROPOSED NUMBER OF WIND TURBINES

21

POWER PER TURBINE

7 MW

DIMENSIONS

**Height: 118 m
Rotor: 163 m**

NEARBY INTERCONNECTION

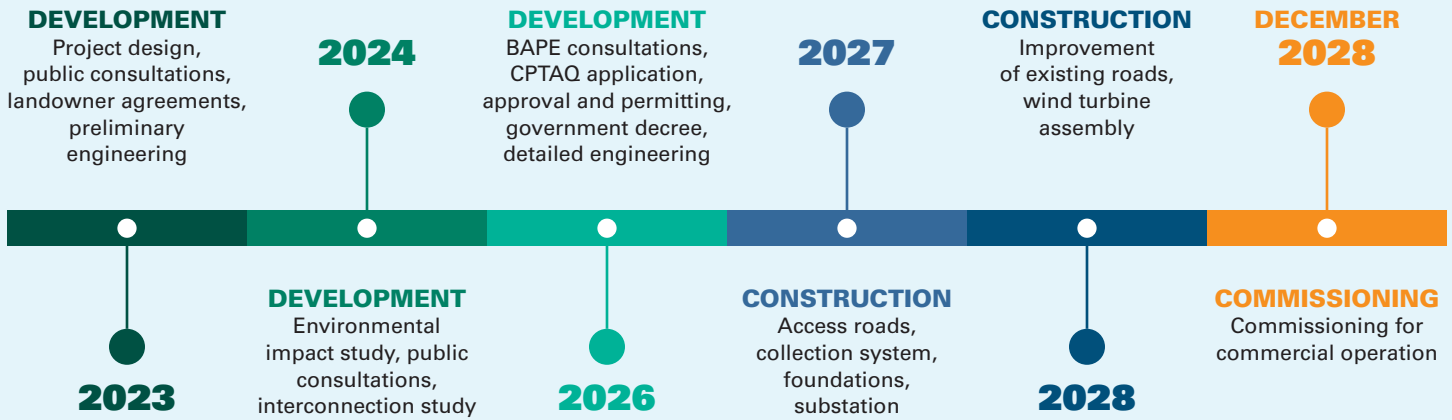
120 kV line in Hemmingford

RCM

Jardins-de-Napierville

Public consultations were held in 2023 to inform residents and gather public input.

PRELIMINARY TIMELINE



250+ Jobs during construction	Approximately \$960,000 paid out to municipalities each year (depending on installed capacity (MW))	30 YEARS Minimum lifespan
---	--	-------------------------------------

With all its projects, Kruger Energy is committed to

- **Being a good neighbour**
- **Respecting the goals of local communities**
- **Prioritizing the principles of sustainable development and environmental protection**

The environmental impact assessment for the project will characterize every aspect of the receiving environment, including the physical, biological and human environment. The study's results will be published and will be the subject of public consultations.

About Kruger Energy

Established in 2004, Kruger Energy is a subsidiary of Kruger Inc. that specializes in developing and managing green and renewable power plants. Including hydro, wind, biomass cogeneration and solar facilities, Kruger Inc. and Kruger Energy own and operate 47 power production sites with a total installed capacity of 650 MW.

Key considerations

Land Use: Kruger Energy has significant experience in developing wind projects in agricultural areas, with a focus on reusing existing infrastructure and avoiding sensitive areas to minimize the impact on arable land. A wind turbine only takes up an area of about 30 m by 30 m.

Economic Impact: The payout to municipalities is expected to total approximately \$960,000 per year. Projected indirect benefits in the region include the creation of jobs and payments to participating landowners. Local communities will also have an opportunity to be involved as investment partners.

Noise Level: The project will comply with existing regulations that set the maximum allowable noise level in rural areas (outside of dwellings) at 40 dBA. The turbines will have a minimum setback distance of 750 metres from all dwellings. The project layout and the results of noise level studies will be shared during future public consultations.

Visual Impact: The visual simulations prepared as part of the project impact study will provide an accurate representation of the environmental impact study and will be used to identify appropriate mitigation measures.

Safety: The safety of our infrastructure is a core value and is critical to our long-term success.

For questions about the project,
please contact us at **1-844-294-6873**
or **info.eolien@kruger.com**.

projeteolienlesjardins.com/en | krugerenergy.com

